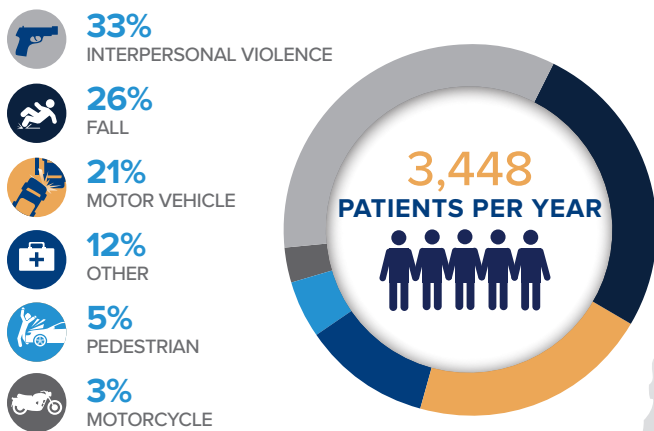




2021 HIGHLIGHTS

PENN'S LEVEL I TRAUMA CENTER

Penn Medicine's Trauma Center is accredited by the Pennsylvania Trauma Systems Foundation as a Level I Regional Resource Trauma Center and is nationally and internationally recognized as a model program for other hospitals. As the field of trauma and surgical critical care has changed over the years, our multidisciplinary teams have advanced the boundaries of what is possible, improving the survival rates and quality of life for traumatically injured or critically ill patients.



RESEARCH

Penn Acute Research Collaboration (PARC): The acute treatment of critically injured or ill patients requires rapid decision and interventions by physicians of different specialties. Given these acute circumstances, it is difficult to perform the vital research necessary to improve patient care and outcomes. The PARC initiative brings together a multidisciplinary team of physicians and researchers in order to develop a framework to facilitate breakthrough, translational research.

- ▶ 88 publications from faculty members in the Division of Traumatology, Surgical Critical Care and Emergency Surgery in 2021
- ▶ Multiple NIH and DOD Funded Grants

HOSPITAL BASED INTERVENTION PROGRAM

The Penn Trauma Violence Intervention Program aims to provide promote holistic healing for violently injured patients through trauma-informed support and connection to community services. Individualized, goal-directed services include peer counseling, healthcare navigation, service connection, and more. This program is supported by the Pennsylvania Commission on Crime and Delinquency and the City of Philadelphia Department of Public Health.

PENN MEDICINE: A REGIONAL RESOURCE TRAUMA CENTER

Throughout 2021, 742 out of 3448 patients seen at the Trauma Center at Penn were transferred from other acute care facilities. Of those, 15 percent came from other designated trauma centers.



97% SURVIVAL RATE

Penn's Trauma Program offers the most advanced specialty care in the region, resulting in exceptional outcomes for patients that rank above national averages.



MULTIDISCIPLINARY APPROACH

Caring for critically injured patients requires a collaborative approach involving trauma surgeons, emergency medicine physicians, nurses and allied health professionals as well as dozens of other specialties.

The Trauma Center at Penn is a vital portal for patients throughout the region who have sustained life-threatening injuries. Most patients have multiple injuries that require the full spectrum of care with specialists in orthopaedics, neurosurgery, interventional radiology, reconstructive surgery and rehabilitation. In every phase of care, patients and families are supported by Penn Medicine's nurses and allied health experts who have special training in trauma management and violence intervention. These experienced teams provide the foundation for assuring a speedy recovery.

TRAUMA & SURGICAL SPECIALIZED TREATMENTS AT PENN MEDICINE

CENTER FOR CHEST TRAUMA | FACIAL TRAUMA | LIMB SALVAGE



29 SPECIALTIES TOTAL

Hundreds of nurses and allied health professionals make up our trauma team.



14 SURGICAL SPECIALTIES

- Cardiothoracic Surgery
- Neurosurgery
- Ophthalmology-Scheie Eye Institute
- Oral Maxillofacial Surgery
- Orthopaedic Surgery
- Plastic Surgery
- Vascular Surgery
- ...and More



15 MEDICAL SPECIALTIES

- Anesthesia
- Emergency Medicine
- Geriatrics: Designated Geriatric Unit
- Physical Medicine and Rehabilitation
- Psychology
- ...and More



**PENN MEDICINE'S
LEVEL I TRAUMA CENTER**
Penn Presbyterian Medical Center
 Pavilion for Advanced Care
 3800 Powelton Avenue
 Philadelphia, PA 19104

NAVAL STRATEGIC HEALTH ALLIANCE FOR READINESS AND PERFORMANCE

Navy Medicine and Penn Medicine launched a unique partnership to integrate members of the Navy with the Trauma Division at PPMC. The program, made up of eleven Navy team members, was designed to provide sustained experiences in all aspects of trauma care – from surgery to anesthesiology to nursing. The partnership will shape the future of military training and promote new approaches and knowledge across both civilian and military healthcare.

TRAINING

Penn Medicine trains surgeons, physicians, nurses, allied health professionals and prehospital care providers in all phases of care using the latest techniques for the critically ill and injured patient. Of the multiple specialized programs, trauma and surgical critical care fellows trained at the Trauma Center at Penn since establishing the fellowship program in 1989, roughly 50 percent are chiefs, chairs and program directors in trauma programs throughout the country and internationally.



**139 TRAUMA FELLOWS
TRAINED SINCE 1996**



**300+ INTERNATIONAL
TRAINEES SINCE 1996**



**24 MILITARY SURGEONS
TRAINED SINCE 1996**



Penn Medicine